

Brown Hill Keswick Creek Stormwater Project

Blue Gum Park/ Kurangga (Park 20)

Update 2

December 2021

Construction underway

Local South Australian company, Leed Engineering and Construction (Leed) moved to site in October 2021, establishing an office compound and spoil stockpile area, which will be in place for the duration of the project.

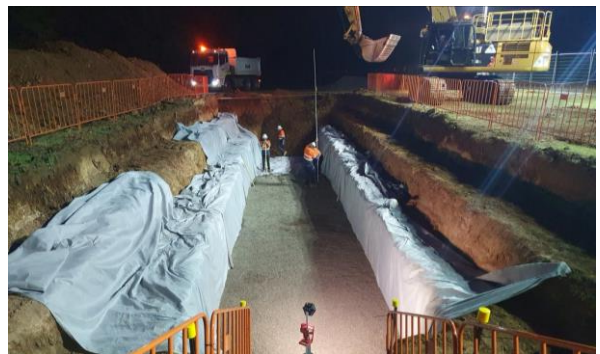
Temporary crossings of the existing open swales and an access road have also been established to enable construction vehicles and workers to access the site, and to ensure the safety of park users.

Construction is now well underway with:

- over half of the earthworks to establish the containment mound adjacent Peacock Road completed (150m of 250m)
- modifications made to the existing north to south shared use path, including elevation of the existing path to meet the containment mound level and construction of a new retaining wall
- footings for the new 4-metre-wide steel pedestrian and light vehicle bridge have been established using steel reinforcement and 3 cubic metres of concrete
- installation of two junction boxes to allow for underground pipes to connect into the new channels and the existing culvert under Greenhill Road
- over half of the new culverts are in place to form the link between the Park Lands Creek and the new open channel, with some works being undertaken at night to avoid impacting local businesses and park users.



Above: Trimming the edges of the containment mound



Above: Trench excavation, ready for culvert installation



Above: Lifting in the culvert crown



Above: Positioning the headwall

In parallel with construction, design refinements have been made to the length of the underground culverts to improve accessibility for park users.

Break over Summer

Works will go on hold from 11 December 2021 to allow free access to Park 20 over Summer.

All shared use paths through Park 20 will be accessible during this time. For the safety of park users, some temporary measures have been put in place where works will continue after the break.

The fenced site compound and soil stockpile areas will remain on site during the break.

Works in early 2022

Works will resume in mid-February 2022 and will be focused on:

- completing the installation of new culverts and preparing for excavation of the open channels
- installation of permanent railing along new north to south shared use path retaining wall
- completing the containment mound adjacent Peacock Road, with remaining earthworks, topsoil placement and grassing
- completing the new pedestrian bridge.

Construction will also occur to establish an elevated path to the north of the tennis courts (which will form part of the containment mound) and an at grade asphalt path near the BMX track.

Once works resume, there will be some access restrictions to ensure the safety of park users, including pedestrians and cyclists. Please follow the directional signage on site.

Landscaping

Some 12,500 new plants are being propagated ready for planting next year. All plants are native to the local area, with some species specifically selected to vegetate the banks of the open channels.

97 trees / larger shrubs will also be planted in and around Park 20 including eucalyptus varieties native to the Adelaide Plains.



Above: *Eucalyptus camaldulensis*, one of the tree species to be planted in Park 20

Staying in touch

For the latest information, including a pedestrian and cyclist access map, and to view the design visit

www.bhkcstormwater.com.au

Should you have any questions or comments please contact our dedicated engagement team on 1300 281 235 or at info@southparklands.com.au

South Park Lands

Blue Gum Park / Kurangga (Park 20)

Pedestrian and cyclist access

